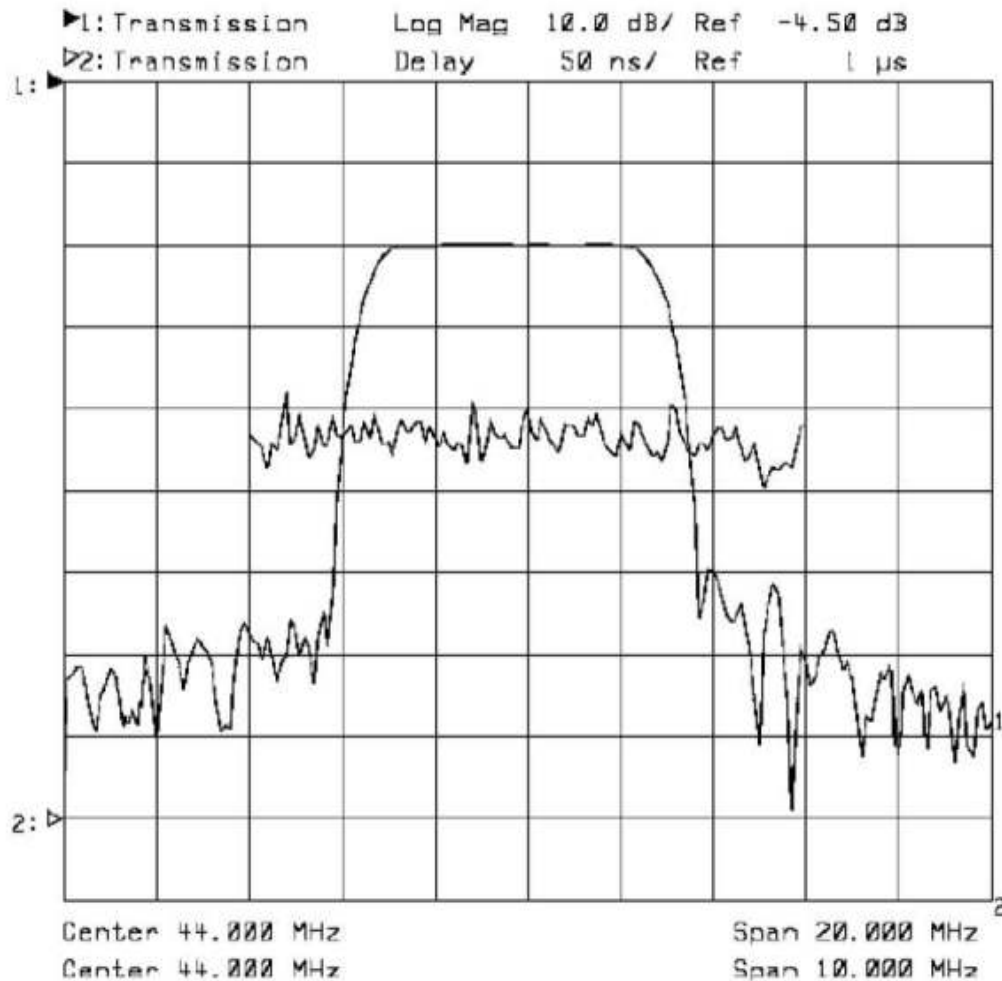


## DESCRIPTION

- 43.75 MHz SAW bandpass filter with 6 MHz bandwidth for Cable Modem and Set-Top box applications.
- SIP5D Package
- RoHS compliant.

## TYPICAL PERFORMANCE



## SPECIFICATION

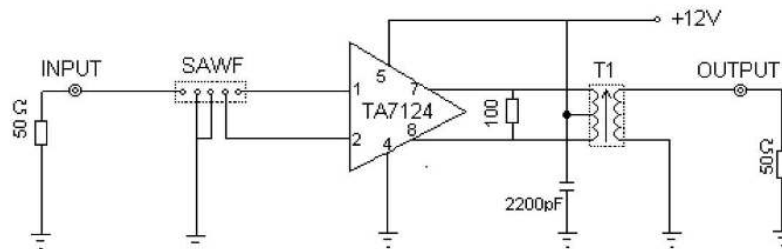
| Parameter                            | Min  | Typ                     | Max  | Units |
|--------------------------------------|------|-------------------------|------|-------|
| Center Frequency ( Fc ) <sup>1</sup> |      | 43.75                   |      | MHz   |
| Insertion Loss <sup>2</sup>          | 14.5 | 15                      | 16.5 | dB    |
| 3 dB Bandwidth                       |      | 6                       |      | MHz   |
| 30 dB Bandwidth                      |      | 76                      |      | MHz   |
| Rejection, 39.75 MHz                 | 38   |                         |      | dB    |
| Rejection, 40.75 MHz                 |      | 2.7                     |      | dB    |
| Rejection, 46.75 MHz                 |      | 2.7                     |      | dB    |
| Rejection, 41.22 MHz                 |      | 0.2                     |      | dB    |
| Rejection, 46.28 MHz                 |      | 0.2                     |      | dB    |
| Rejection, 47.75 MHz                 | 37   |                         |      | dB    |
| Rejection, 35 to 39 MHz              | 42   |                         |      | dB    |
| Rejection, 39 to 39.75 MHz           | 37   |                         |      | dB    |
| Rejection, 47.75 to 50 MHz           | 36   |                         |      | dB    |
| Rejection, 50 to 55 MHz              | 42   |                         |      | dB    |
| Input Impedance                      |      | 1.1 K $\Omega$ //16.4pf |      |       |
| Output Impedance                     |      | 1.1 K $\Omega$ //5.0pf  |      |       |

- Notes:
1. Defined as the average of the lower and upper 3 dB frequencies.
  2. Value at 36.15 MHz.
  3. Measured over Fc +/- 3.8 MHz.
  4. Specifications are guaranteed over the operating temperature range.

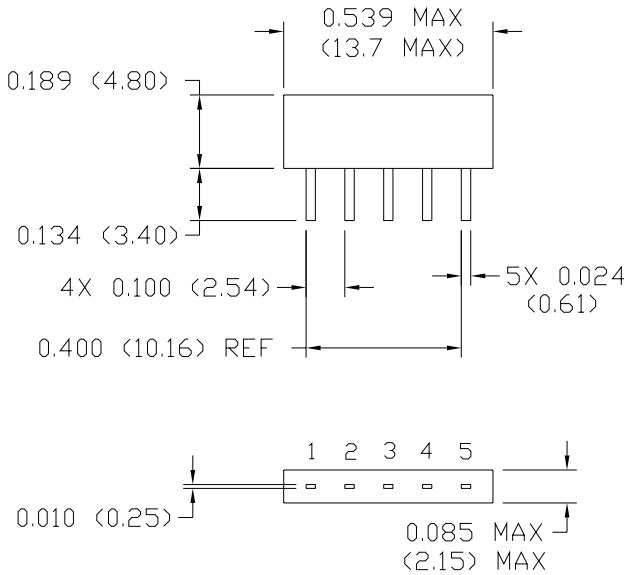
## MAXIMUM RATINGS

| Parameter                                | Min | Max | Units |
|--|-----|-----|-------|
| Storage Temperature Range                | -40 | +85 | °C    |
| Operating Temperature Range              | -20 | +75 | °C    |
| Max. D. C. Voltage between each terminal |     | 10  | V     |

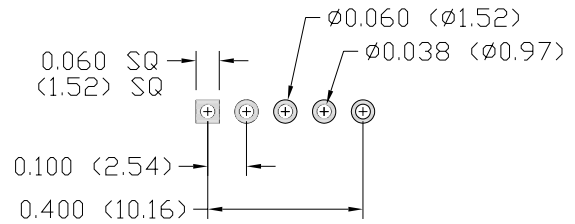
## TEST CIRCUIT



**PACKAGE OUTLINE**



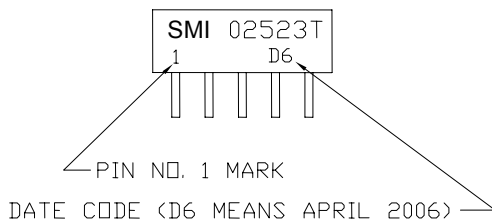
**SUGGESTED PCB FOOTPRINT**



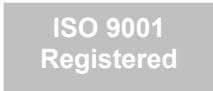
| PIN | DESIGNATION |
|-----|-------------|
| 1   | INPUT       |
| 2   | INPUT       |
| 3   | GROUND      |
| 4   | OUTPUT      |
| 5   | OUTPUT      |

NOTE:  
1. DIMENSIONS IN ( ) ARE IN MM.  
ALL TOLERANCES ARE .XXX = ±.006 (±.15)

**MARKING**



Month = 1 2 3 4 5 6 7 8 9 10 11 12  
Month Code = A B C D E F G H I J K L



All specifications are believed to be accurate and reliable. However, Spectrum Microwave reserves the right to make changes without notice.  
© 2010 All rights reserved.