

# ION™ SA500 Secure Appliance

Remote Device Administration Solution for Small Offices & Branch Locations

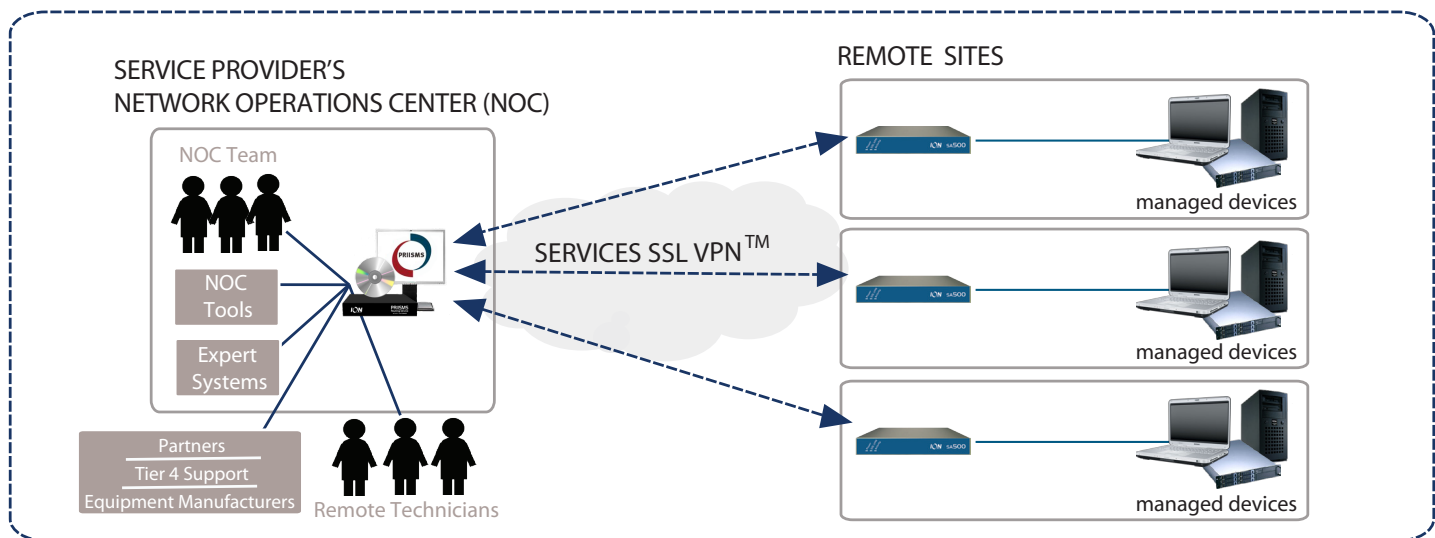


- **Remote management & monitoring**
- **Snap-in installation; automatically navigate complex enterprise IP addressing schemes**
- **Add endpoints and features to match your service delivery model when you need them**
- **Plug-and-play remote service delivery**
- **Clientless access**
- **Open architecture for easy integration**
- **Management interface (IP)**

With its low price point and drop-in deployment model, the ION™ SA500 is the ideal choice for service providers that remotely service Customer Premise Equipment (CPE).

ION SA500 allows service providers to reduce the high cost of field service delivery, as well as leverage Network Operations Center (NOC) tools to deliver the latest patches and proactive monitoring services. Service providers gain increased efficiencies, while customers (large and small) benefit from improved service levels.

The ION SA500 lets service providers deliver faster response to customers, while being more cost effective than ever before.



SA500 Features	
Remote Management & Monitoring	SA500
SnapNAT™: Snap-in installation; automatically navigate complex enterprise IP addressing schemes	✓
Pay-as-you-grow service delivery: Add endpoints and features - to match your service delivery model - when you need them	✓
Plug-and-play remote service delivery	✓
Clientless access	✓
Open architecture for easy integration	✓
Management interface (IP)	✓
Connectivity	SA500
Services SSL VPN™: Dynamic, bi-directional SSL VPN tunnel for service provider remote access	✓
Internet: SSL VPN	✓
Proxies: RDP, VNC, SSH	With PRIISMS
Security & Audit	SA500
Multi-factor authentications	✓
Encryption	✓
Access log	✓
Keystroke log	✓
Embedded firewall	✓
Interfaces	SA5600
Ethernet ports	2
Table mount	✓

## Technical Specifications

### Secure Endpoint Connectivity

- IP (logical) ports: 6 (with upgrade options up to 24)

### Isolated Management LAN

- 100BaseT Ethernet (RJ45)

### Administration / Management

- Local: Aux port (300bps - 115.2Kbps)
- Remote: PRIISMS compliant
- Diagnostic LEDs: Power, Activity, Services SSL VPN Status

### Physical Description & Operating Environment

- 6.25in W x 1.125in H x 6.25in D (15.9cm W x 2.5cm H x 15.9cm D)
- Weight: 1.6lbs. (.73 kg)
- Power: 100-240VAC 50/60 Hz
- Operating Temperature: 32° to 113° F (0° to 45° C)
- Storage Temperature: -4° to 140° F (-20° C to 60° C)
- Humidity: 10% to 90% non-condensing

### Approvals & Certifications

- FCC Part 15, Class A
- EN55024, Class A
- EN55024
- UL E232655
- ITE 55DB
- CE
- RoHS/WEEE

### Chassis

- Table